

4

3

2

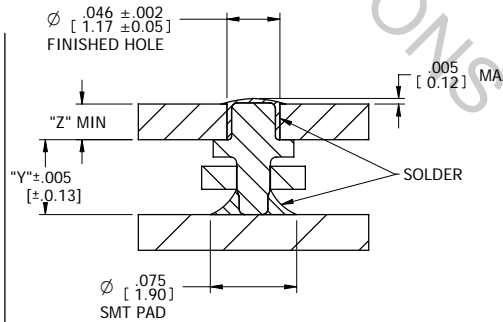
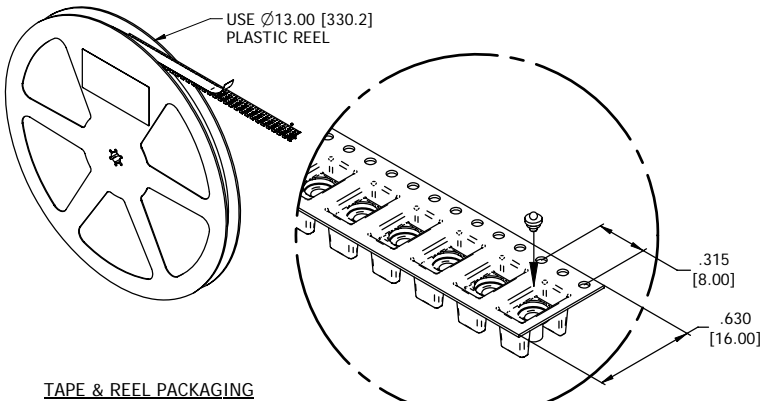
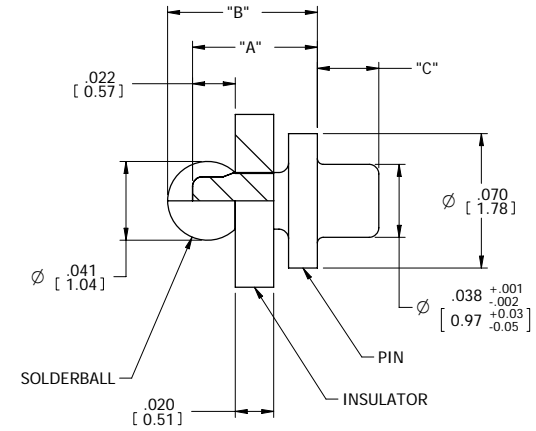
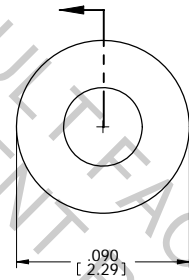
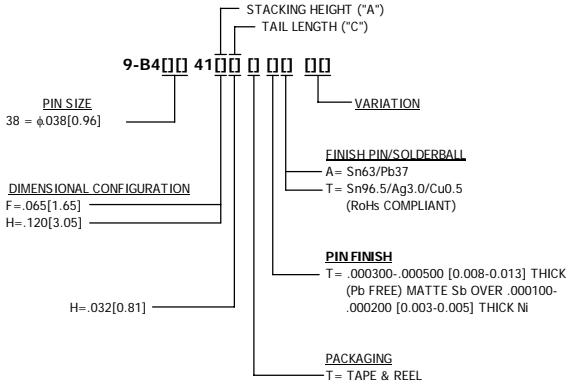
1

- NOTES: UNLESS OTHERWISE SPECIFIED
- 1) INTERPRET DRAWING IN ACCORDANCE WITH ASME Y14.5M - 1994
 - 2) PARTS TO BE PACKAGED IN TAPE & REEL PER EIA STD-481
 - 3) MATERIALS: PIN= COPPER; INSULATOR= FR-4 GLASS EPOXY; SOLDERBALL MATERIAL= SnPb (BLACK) & Pb FREE (BLUE)
 - 4) RECOMMENDED PICK HEIGHT: .022 [0.56] FROM TOP OF POCKET
 - 5) SOLDERABILITY PER IPC/EIA J-STD-002, TEST A, CATEGORY 3

PART NUMBER LIST							
ASSEMBLED PART NO	"A"	"B"	"C"	"Y"	"Z"	INSULATOR COLOR	QTY/REEL
9-B43841FHHTA	.065 [1.65]	.078±.004 [1.98±0.10]	.032±.000/- .002 [0.81±0.00/-0.05]	.070 [1.78]	.042 [1.06]	BLACK	2000±15%
9-B43841FHTTT	.065 [1.65]	.078±.004 [1.98±0.10]	.032±.000/- .002 [0.81±0.00/-0.05]	.070 [1.78]	.042 [1.06]	BLUE	2000±15%
9-B43841HHHTA	.120 [3.05]	.133±.004 [3.38±0.10]	.032±.000/- .002 [0.81±0.00/-0.05]	.125 [3.18]	.042 [1.06]	BLACK	1,700±15%
9-B43841HHTTT	.120 [3.05]	.133±.004 [3.38±0.10]	.032±.000/- .002 [0.81±0.00/-0.05]	.125 [3.18]	.042 [1.06]	BLUE	1,700±15%

REV	REVISION RECORD	ECN	BY	APVD	DATE
A	INITIAL RELEASE	505122	HR	PVB	09/20/07
B	CHANGE "HOLE SIZE" TO "PIN SIZE"	505224	HR	PVB	12/18/07
C	ADD P/N PER EWR105675	505160	HR	PVB	01/29/08

PART NUMBER BREAKDOWN



CUSTOMER DRAWING

The drawing and the information set forth hereon are the property of AutosplICE, Inc. and are to be held in trust and confidence. Publication, disclosure, or use for any purpose not expressly authorizing in writing by AutosplICE, Inc. is prohibited.

MATERIAL:
FINISH:

TOLERANCES UNLESS OTHERWISE SPECIFIED DIMENSIONS IN INCHES	DECIMAL	FRACTION	ANGULAR
	XX = ±.01	[XX] = [0.3]	± 1°
	XXX = ±.005	[XXX] = [0.13]	
	ANGULAR		± 1°

autosplICE
AutosplICE, Inc. 10121 Barnes Canyon Rd. San Diego, CA 92121-2725 858.535.0077

DATE: 12/01/01
ENGINEERED BY: H REYNOLDS
TITLE: STD SOLDERBALL PIN ASSEMBLY

SIZE: C
SCALE: OAE89
REV: C

4

3

2

1